

Aquatic Systems Inc  
Lake and Wetland Management  
1-800-432-4302

FishHawk Ranch CDD I & II  
Pond Maintenance Inspection Report  
February 2011

Conducted by: Joshua F. McGarry, Service Manager  
Mike Snelling, Assistant Service Manager

Inspection Date: 3/9, 3/25

February was much warmer than January which brought spring growth to FishHawk Ranch. During my inspection I observed that many littoral shelves were recovering from their winter dormancy. For example; the littoral shelf in pond #72 has new bulrush growth. This also means that there was invasive growth such as alligator weed, torpedo grass, slender spike rush and algae.

#72



The ponds below have been large algae producers in the past. They need multiple treatments per month to keep the algae suppressed.

#12



#10



#59



#68

Ponds #51, #52, #67 and #57 are typically large algae producers also. Sites #51, #52 and #67 are easier to treat and keep under control now that the banks are getting mowed quarterly.

We have begun a three month systemic treatment for slender spike rush on these sites along with ponds #10, #12, #27-#31, #46, #15-#17, #100, #68, #42, #65 and #66.

We are currently in the permitting process of adding sterilized grass carp as a biological control method for submersed weeds. I will be following up on this process in next month's report.

#51



#52



#67

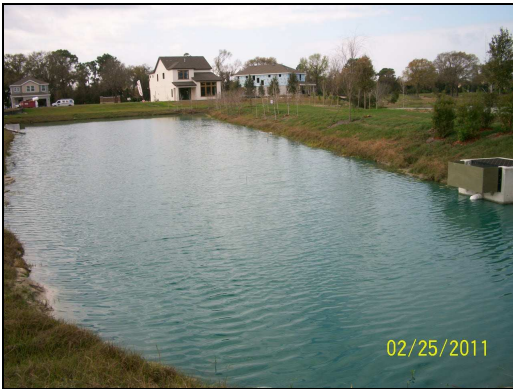


#57

Pond #106 is a new site that was added on in the beginning of February. We observed a pair of nesting Sand Hill Cranes in the adjacent wetland, which is within 300 feet of #106. We will not treat in that area until the nesting process is complete.

Sites #106, #48, #10 and #25 are great examples of how most of the waterways in FishHawk Ranch look.

#106



#48



#25



#10